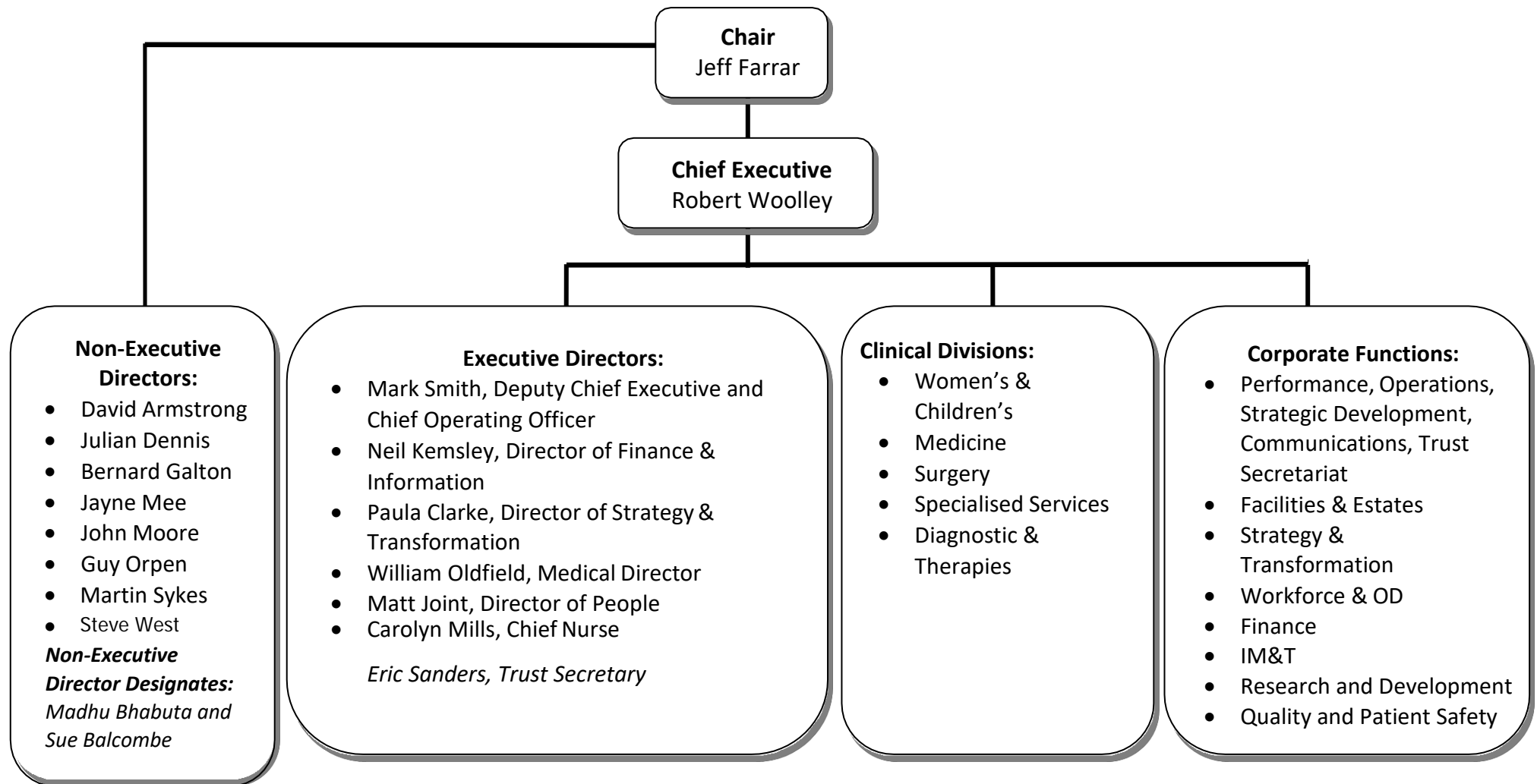


## University Hospitals Bristol NHS Foundation Trust – Organisational Structure (Board and Divisions)



<b><u>Women's and Children's Division</u></b>  <b>Clinical Chair: Bryony Strachan</b> <b>Divisional Director: Ian Barrington</b>	<b><u>Medicine Division</u></b>  <b>Divisional Director: Victoria Hastings</b> <b>Clinical Chair: Kathryn Bateman</b>	<b><u>Surgery, Head and Neck Division</u></b>  <b>Divisional Director: Philip Kiely</b> <b>Clinical Chair: Sanjoy Shah</b>	<b><u>Specialised Services Division</u></b>  <b>Divisional Director: Owen Ainsley</b> <b>Clinical Chair: Alan Bryan</b>	<b><u>Diagnostic and Therapies Division</u></b>  <b>Divisional Director: Alison Lowndes (interim)</b> <b>Clinical Chair: Kate Love</b>
Children's Services (including the children's A&E and theatres) Children's Medical Services Children's Surgical Services Children's Critical Care, Cardiac and Neurosciences Services  St Michael's Services including: - Neonatology and Transitional Care - Fetal Medicine - Reproductive Medicine - Obstetric Services - Gynaecology - Maternal Medicine - Audiology	General Medicine Adult A&E Respiratory Endocrinology Neurology Dermatology Rheumatology Sexual Health Gastroenterology Care of the Elderly Liaison Psychiatry SARC Psychological Therapies	Colorectal Surgery Upper GI Surgery Thoracic Surgery Orthopaedics Vascular surgery Maxillofacial surgery Adult ENT Ophthalmology (Eye Hospital) Dental Hospital General and Cardiac theatres Queen's Day Unit St Michael's Theatres Central Sterile Services Integrated Critical Care ITU and outreach Anaesthetics (excluding Cardiac and Paediatric anaesthesia)	Cardiac Surgery Cardiology Cardiac Anaesthesia Cardiac Intensive Care Oncology Clinical Haematology Homoeopathy Cardiac Echo Clinical Genetics Genomics	Physiotherapy Occupational Therapy Orthotics, Nutrition & Dietetics, Adult Speech and Language Therapy Adult Audiology Laboratory Medicine Pharmacy Radiology Medical Physics & Bioengineering MEMO Neurophysiology

**Trust Services Division:** Andy Headdon- Director of Facilities & Estates, Steve Gray – CIO/Head of Digital Services, David Wynick - Director of Research