

Children's Hearing Centre, University Hospitals Bristol
Guide for connecting a new slim tube with mould to a CROS device

This guide will show you how to connect a new slim tube with earmould to a CROS device

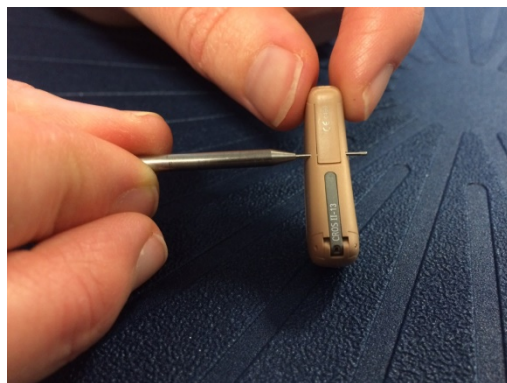


You will need:

The CROS device (this is the device which sits on the poorer-hearing ear)

The new slim tube with earmould

A pin tool



Carefully push the pin fully out of the device using the pin tool

Tip: do this over a tray so that you can catch the pin when it pops out!

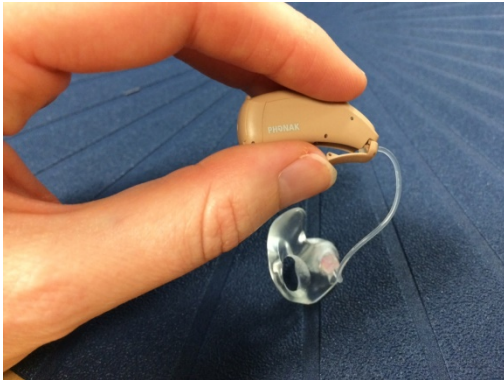


Use the pin tool to carefully push the cover away from the CROS device

Insert the tip of the slimtube into the gap in the cover. This is very fiddly! See photos below for further detail.



Children's Hearing Centre, University Hospitals Bristol
Guide for connecting a new slim tube with mould to a CROS device



With the tip of the slim tube through the gap in the cover, fit the cover back onto the device, starting with the top end as seen in the picture here.



With the cover replaced, push the pin fully back into the device.



This picture shows how the CROS device should look with the slim tube and earmould correctly inserted



In this image, the slim tube was inserted incorrectly and so the mould is not facing the right way



We are on hand to help – please don't hesitate to call us on 0117 342 1611 if you have any questions or if you would like us to fit the slim tube for you.