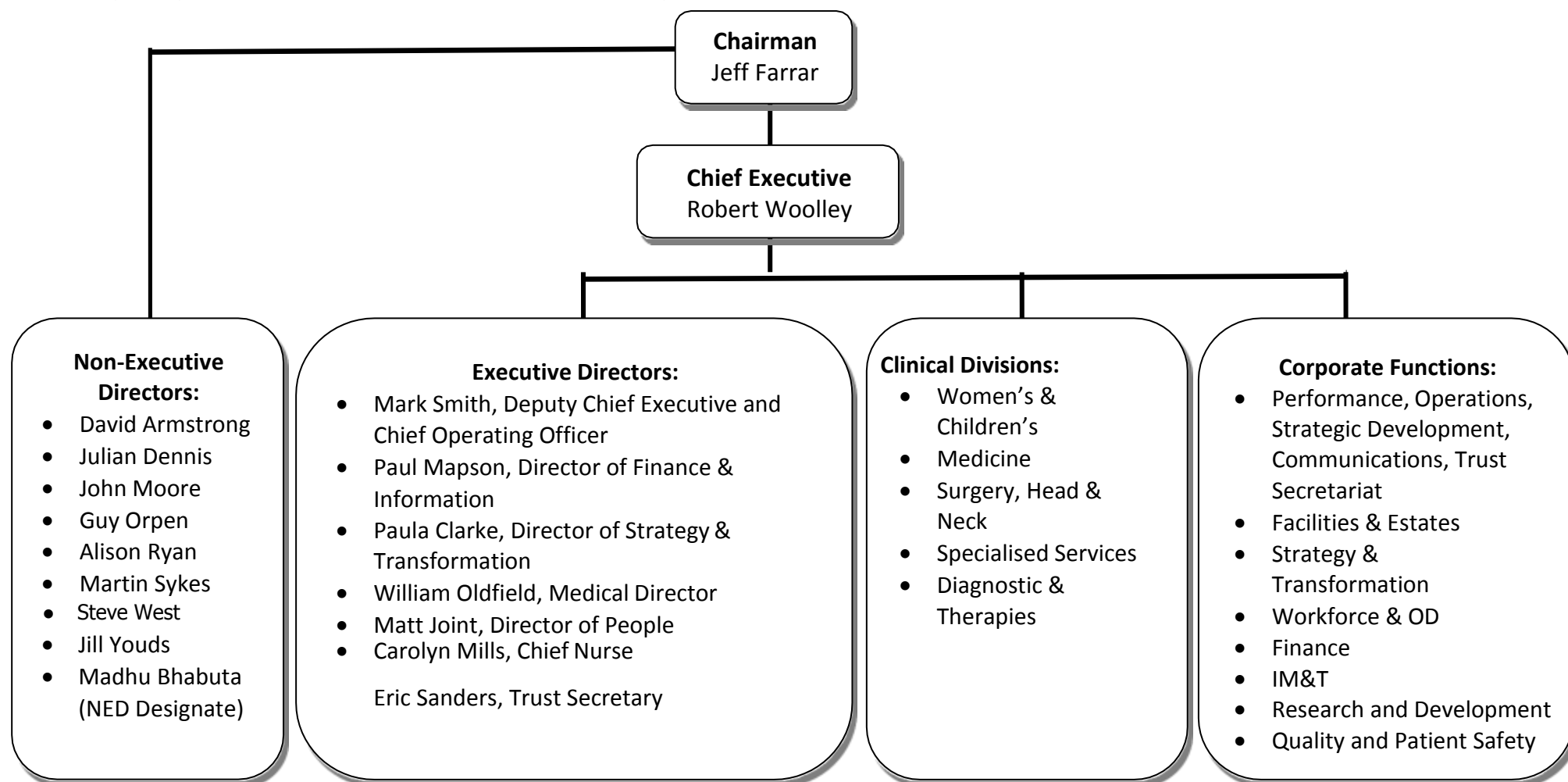


## University Hospitals Bristol NHS Foundation Trust – Organisational Structure (Board and Divisions)



<p><b><u>Women's and Children's Division</u></b></p> <p><b>Clinical Chair:</b> <i>Bryony Strachan</i>  <b>Divisional Director:</b> <i>Ian Barrington</i></p>	<p><b><u>Medicine Division</u></b></p> <p><b>Divisional Director:</b> <i>Victoria Hastings</i>  <b>Clinical Chair:</b> <i>Kathryn Bateman</i></p>	<p><b><u>Surgery, Head and Neck Division</u></b></p> <p><b>Divisional Director:</b> <i>Philip Kiely</i>  <b>Clinical Chair:</b> <i>Sanjoy Shah</i></p>	<p><b><u>Specialised Services Division</u></b></p> <p><b>Divisional Director:</b> <i>Owen Ainsley</i>  <b>Clinical Chair:</b> <i>Alan Bryan</i></p>	<p><b><u>Diagnostic and Therapies Division</u></b></p> <p><b>Divisional Director:</b> <i>Alison Grooms (interim)</i>  <b>Clinical Chair:</b> <i>Kate Love</i></p>
<p>Childrens' Services (including the children's A&amp;E and theatres)            Children's Medical Services            Children's Surgical Services            Children's Critical Care, Cardiac and Neurosciences Services</p> <p>St Michael's Services including:            - Neonatology and Transitional Care            - Fetal Medicine            - Reproductive Medicine            - Obstetric Services            - Gynaecology            - Maternal Medicine            - Audiology</p>	<p>General Medicine            Adult A&amp;E            Respiratory            Endocrinology            Neurology            Dermatology            Rheumatology            Sexual Health            Gastroenterology            Care of the Elderly            Liaison Psychiatry            SARC            Psychological Therapies</p>	<p>Colorectal Surgery            Upper GI Surgery            Thoracic Surgery            Orthopaedics            Vascular surgery            Maxillofacial surgery            Adult ENT            Ophthalmology (Eye Hospital)            Dental Hospital            General and Cardiac theatres            Queen's Day Unit            St Michael's Theatres            Central Sterile Services            Integrated Critical Care            ITU and outreach            Anaesthetics (excluding Cardiac and Paediatric anaesthesia)</p>	<p>Cardiac Surgery            Cardiology            Cardiac Anaesthesia            Cardiac Intensive Care            Oncology            Clinical Haematology            Homoeopathy            Cardiac Echo            Clinical Genetics            Genomics</p>	<p>Physiotherapy            Occupational Therapy            Orthotics, Nutrition &amp; Dietetics, Adult Speech and Language Therapy            Adult Audiology            Laboratory Medicine            Pharmacy            Radiology            Medical Physics &amp; Bioengineering            MEMO            Neurophysiology</p>

**Trust Services Division:** Andy Headdon- Director of Facilities & Estates, Steve Gray – CIO/Head of Digital Services, David Wynick - Director of Research