



Integrating Sexual Health across Bristol North Somerset & South Gloucestershire

Information Event
– Wednesday 18th January 2017

Our Partners

We are holding an information event On Wed 18th January 2017

“Presenting the new integrated sexual health service and plans for community services in Bristol and South Gloucestershire”

**Venue: Vassall Centre, Gill Avenue, Bristol, BS16 2QQ
Please drop in any time between 3-8pm**

We have been awarded the integrated sexual health services contract for Bristol, North Somerset and South Gloucestershire from April 2017.

Come and hear our plans for community service and give us your feedback.

You can find out more information on our plans on our web page:

<http://www.uhbristol.nhs.uk/patients-and-visitors/your-hospitals/other-services-in-bristol/bristol-sexual-health-services/what's-new>

What have we been commissioned to provide?

- **Specialist and Community Sexual Health and Reproductive Services in Bristol, North Somerset and South Gloucestershire, and chlamydia screening services in Bath and North East Somerset**

But not:

- **Sexual health services provided in general practice;**
- **Sexual health services provided in pharmacies;**
- **HIV treatment and support services;**
- **Relationship and sex education in schools**



Our Vision for an Integrated Service

The Unity Vision is for healthier relationships and sexual well-being throughout life, with improved sexual health outcomes for the people of Bristol, North Somerset and South Gloucestershire

We will achieve this through a co-ordinated approach to prevention and management of sexual health problems across organisations





**What will look different for
service users in the next year?**

What will look different for service users in the next year?

Interactive Website with online information and videos to direct patients to the services they need

Single Point of Telephone Access with booking for all services

Introduction of a on line Self Testing kit service

Health Promotion campaigns, driven by local needs

A new specialist complex sexual health service in Yate

A new Pregnancy Advisory service for North Somerset

A new Saturday Young Persons clinic at Weston General Hospital

Increased capacity to see service users on evenings and Saturdays

What does this specifically mean for Young Persons services?

Working together with Brook will lead to improved focus on Young People

Focussing on under 20's and the most vulnerable young people

Better links between provision in schools and community young peoples services

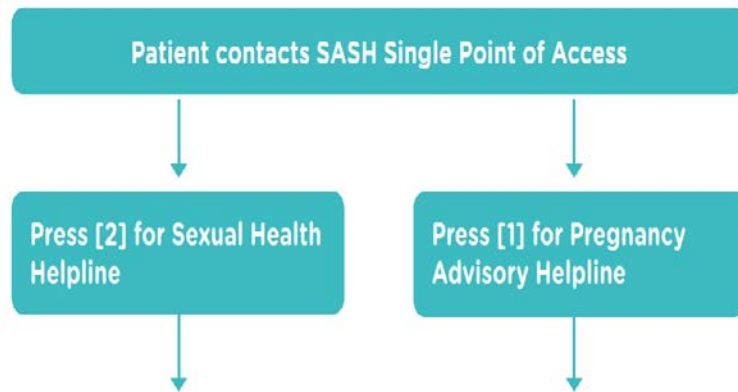
Extending the reach of our services through on-line testing, advice and keeping safe

Additional North Somerset dedicated young persons clinic and access to pregnancy advice



Examples of our on-line and social media approach

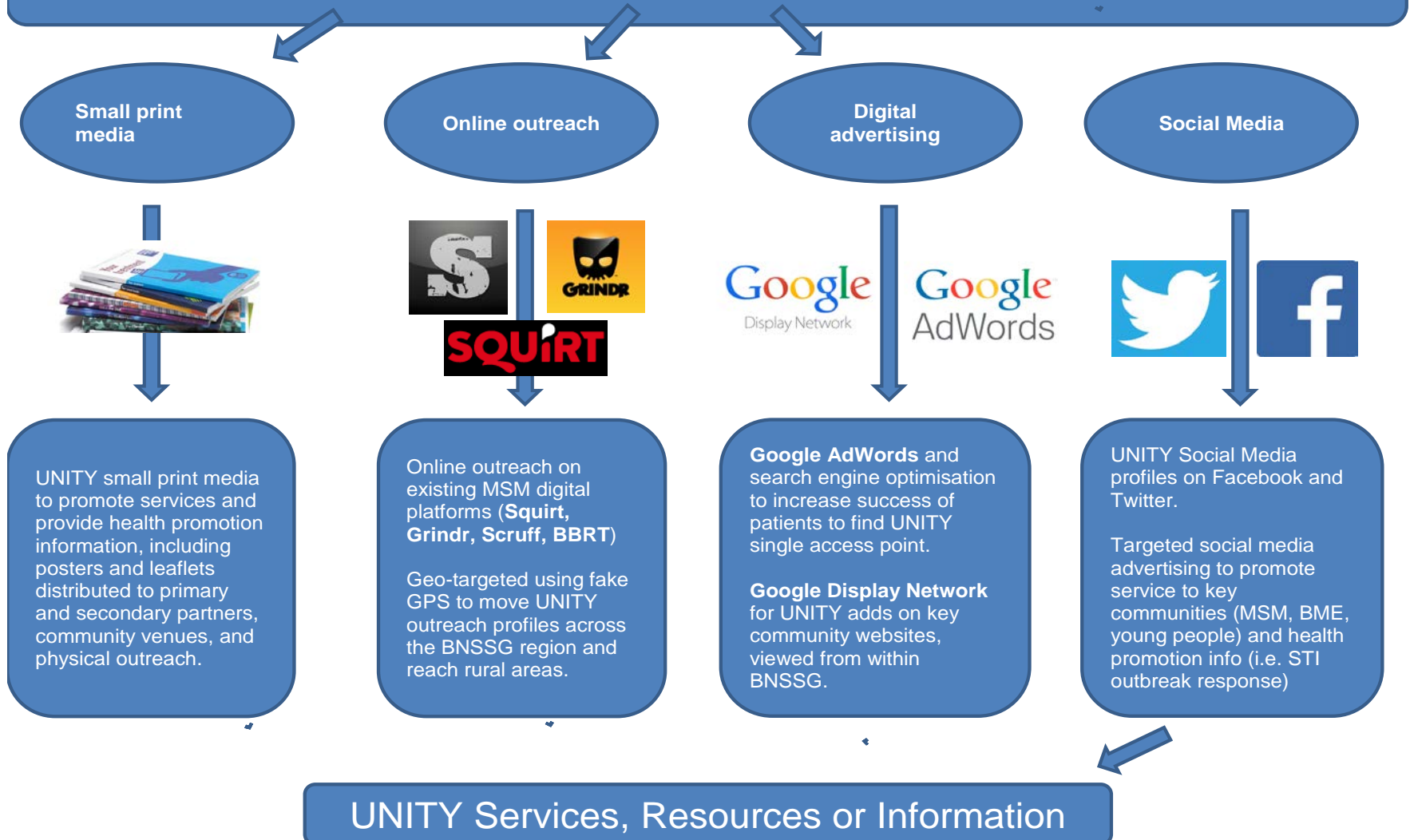
Empowering our population through technology: Single point of access, single brand, single website



Supporting you and
your sexual health

The screenshot shows the Unity Sexual Health website. At the top, there's a navigation bar with the Unity logo, 'Sexual Health' text, and links for 'Our Services', 'STIs', 'Contraception', 'Pregnancy', 'I'm Under 20', and 'About SASH'. A phone number 'Call us 01234 567 890' is also present. The main hero section features a couple in a field with the text 'Introducing your new one-click one-call integrated sexual health service' and a 'search services' button. Below this is a section 'I want to know about...' with buttons for 'Sexual health', 'Contraception', 'Pregnancy options', 'I'm under 20 years old', 'I'm a health professional', and 'See all services/find a service'. The 'Video resources' section displays three video thumbnails: 'Contraception Facts', 'LGBT', and 'Starting a new relationship', each with a 'Watch video' link. At the bottom, there's a 'Watch all Videos' button and a 'Join us on Youtube' button. A blue footer bar contains a clipboard icon, the text 'Use our STI Symptom Checker', and a 'Begin check' button.

Reaching a wider range of people through Health Promotion & Social Marketing





**Mapping access to on-the-ground
sexual health services across
Bristol, North Somerset and South
Gloucestershire**

- ID Name
- 1 Brook Young People's Clinic
 - 2 Abbeywood Community School
 - 3 Ashton Park School
 - 4 Bedminster Down School
 - 5 Bridge Learning Campus
 - 6 Bristol Brunel Academy
 - 7 Bristol Metropolitan Academy
 - 8 Henbury School
 - 9 Marlwood School
 - 10 Merchants Academy
 - 11 Oasis Academy Brightstowe
 - 12 Oasis Academy John Williams
 - 13 Orchard School
 - 14 Patchway Community College
 - 15 Amelia Nutt Clinic YPC
 - 16 Cadbury Heath YPC
 - 17 Central Health Clinic
 - 18 Charlotte Keel Health Clinic
 - 19 Clevedon Community SHC & YPC
 - 20 Cossham Hospital
 - 21 Downend Community SHC
 - 22 Lawrence Weston YPC
 - 23 Patchway YPC
 - 24 South Bristol Community Hospital
 - 25 Southmead YPC
 - 26 Yate Community SHC & YPC
 - 27 Bourneville Locality Centre
 - 28 Nailsea Tower House
 - 29 Weston College
 - 30 Worle Health Centre
 - 31 Churchill Academy
 - 32 Gordano School
 - 33 Hans Price Academy
 - 34 Priory Community School
 - 35 St Katherine's School
 - 36 Wish Centre

BNSSG Young Persons and all Age Sexual Health Provision (clinics and schools outreach) mapped against Deprivation areas

Sexual Health Services

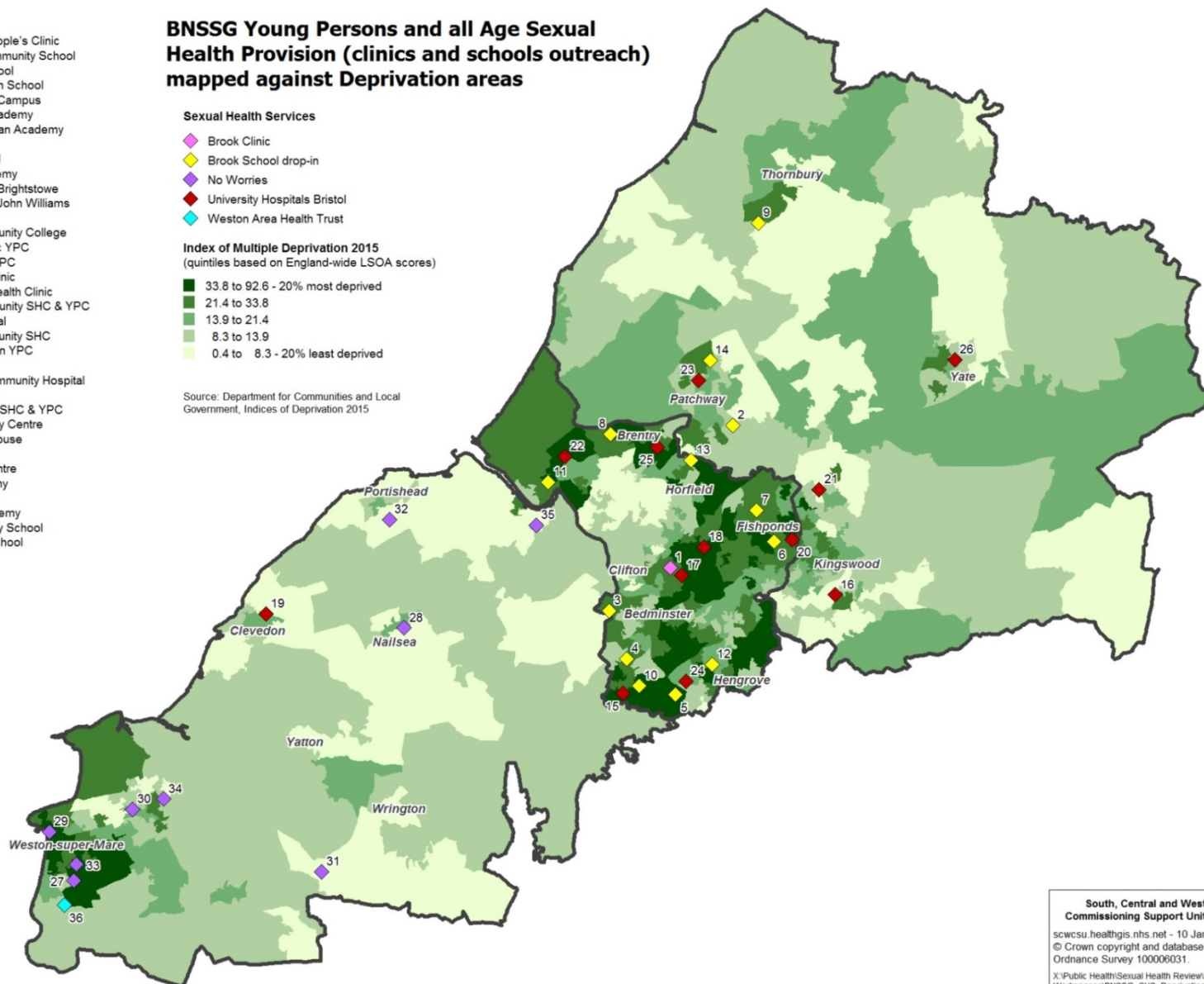
- ◆ Brook Clinic
- ◆ Brook School drop-in
- ◆ No Worries
- ◆ University Hospitals Bristol
- ◆ Weston Area Health Trust

Index of Multiple Deprivation 2015

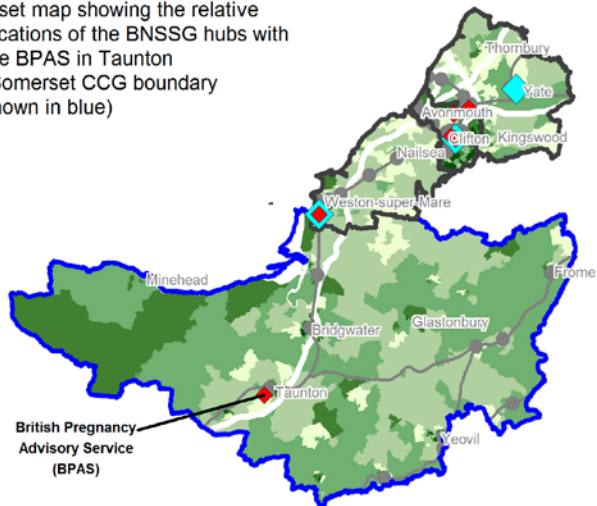
(quintiles based on England-wide LSOA scores)

- 33.8 to 92.6 - 20% most deprived
- 21.4 to 33.8
- 13.9 to 21.4
- 8.3 to 13.9
- 0.4 to 8.3 - 20% least deprived

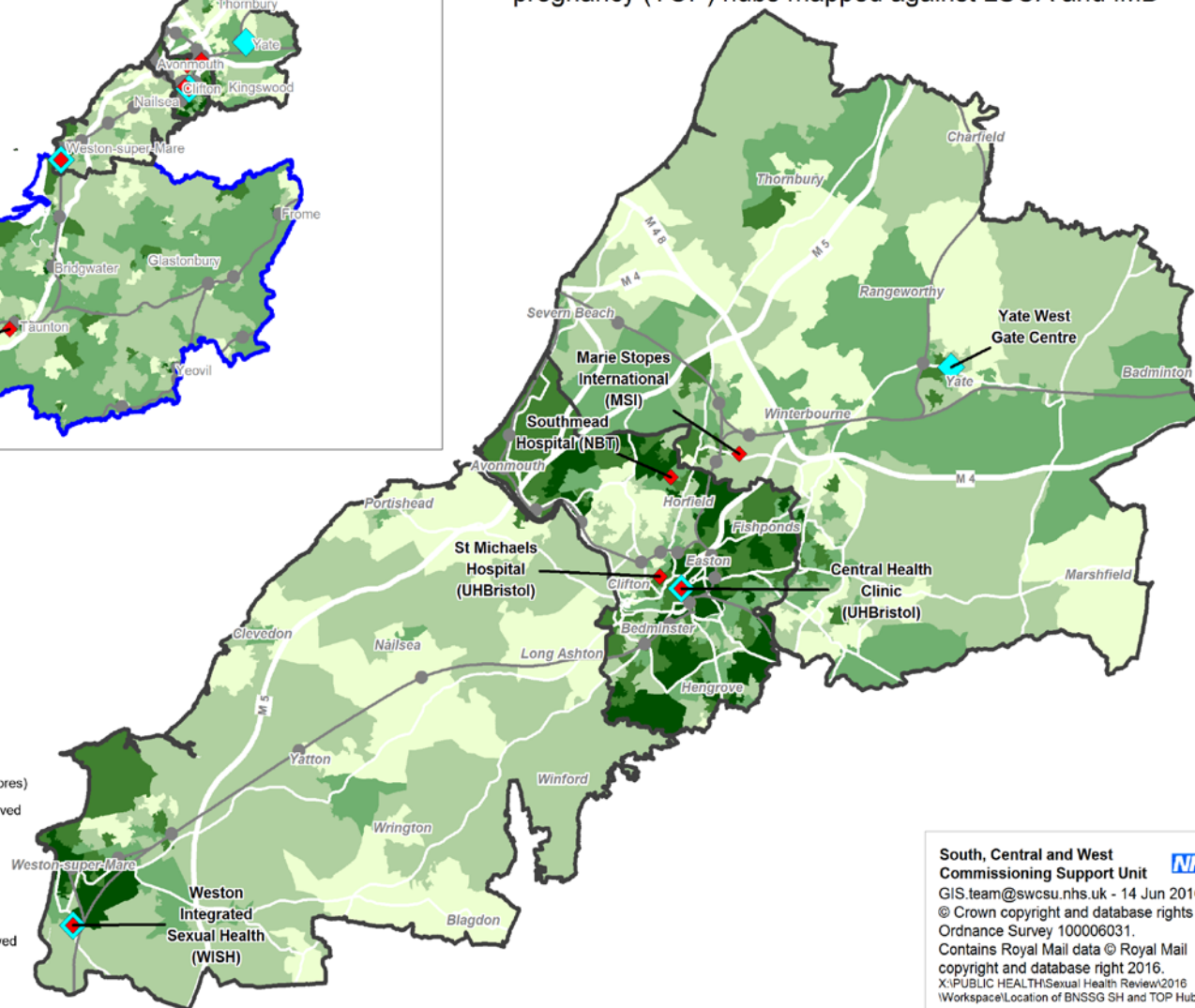
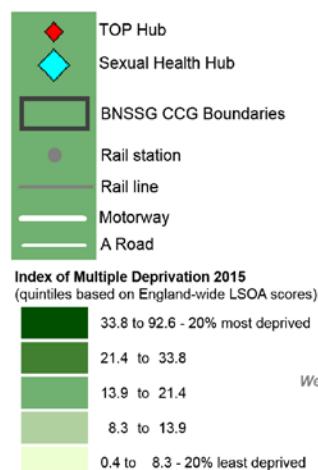
Source: Department for Communities and Local Government, Indices of Deprivation 2015



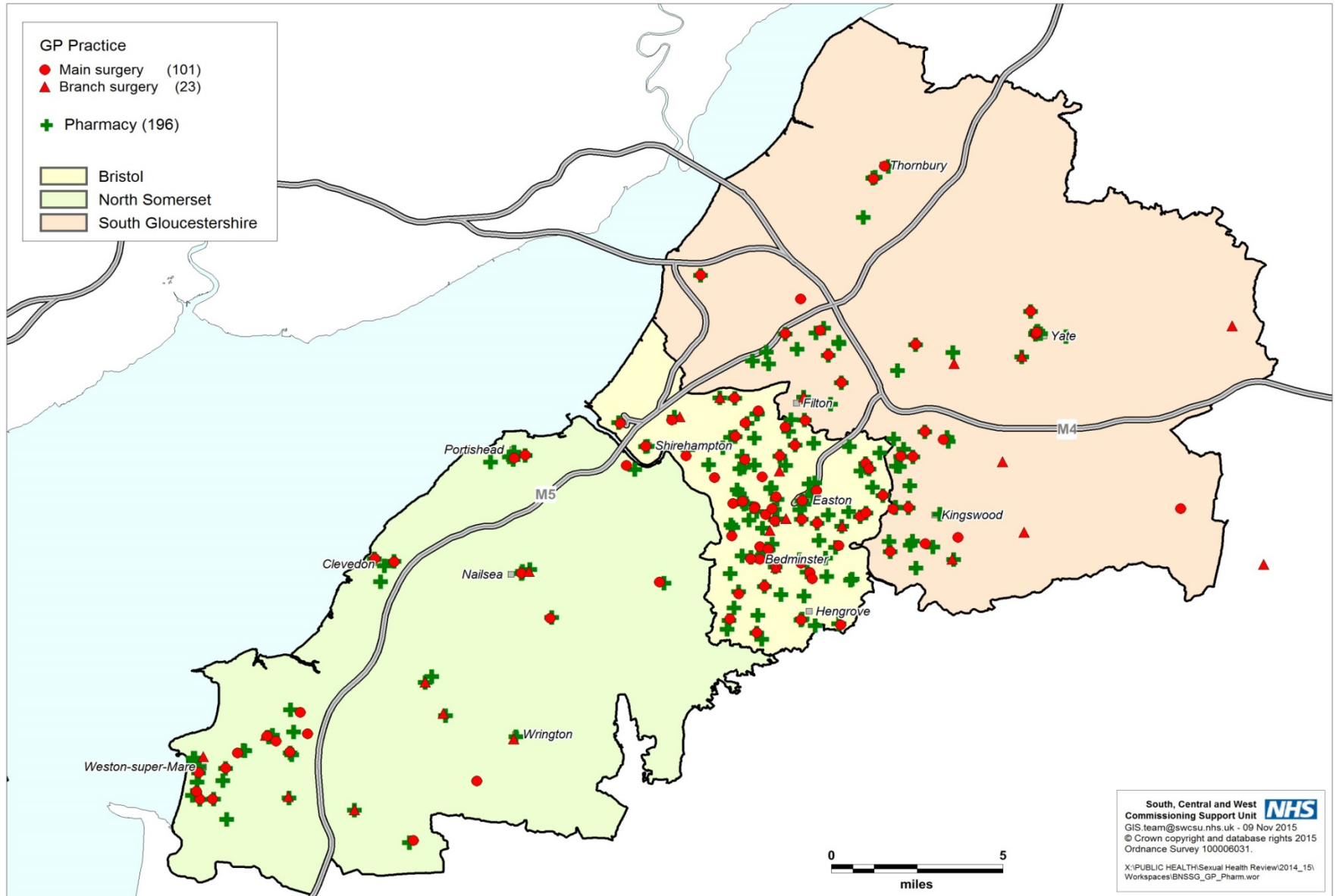
Inset map showing the relative locations of the BNSSG hubs with the BPAS in Taunton (Somerset CCG boundary shown in blue)



Location of BNSSG Level 3 Sexual Health and Termination of pregnancy (TOP) hubs mapped against LSOA and IMD



South, Central and West
Commissioning Support Unit
GIS.team@swcsu.nhs.uk - 14 Jun 2016
© Crown copyright and database rights 2016
Ordnance Survey 100006031.
Contains Royal Mail data © Royal Mail
copyright and database right 2016.
X:\PUBLIC HEALTH\Sexual Health Review\2016
Workspace\Location of BNSSG SH and TOP Hubs wor
TP: #35209 - RS





Changes being made to Community Sexual Health Services

Changes to community all age clinics

		CURRENT				PROPOSED	
All age Clinics	Council	Day	Time	Duration (hours)	Frequency		
Cossham	Bristol	Thursday	9-12.30	3.5	Weekly		No change
Cossham	Bristol	Thursday	13.00-16.30	3.5	Weekly		No change
South Bristol Community Hospital	Bristol	Wednesday	9 – 12.30	3.5	Weekly		No change
South Bristol Community Hospital	Bristol	Wednesday	13.00-16.30	3.5	Weekly		No change
Charlotte Keel	Bristol	Wednesday	13.30 - 16.30	3.5	Weekly		No change
Yate	South Glos	Thursday	18.00-21.30	3.5	Weekly		Replaced with Level 3 clinic session in Yate
Downend	South Glos	Tuesday	18.00-21.30	3.5	Weekly		No change
Charlotte Keel	Bristol	Monday	11.30-15.00	3.5	Weekly		Reduced service Provision on Wednesday
Downend	South Glos	Thursday	13.15-16.15	3.5	Weekly		Reduced service Provision on Tuesday
Southmead	Bristol	Wednesday	18.00-21.00	3.0	Weekly		Re-provided on line and at Southmead YP Clinic & Central Health Clinic
Thornbury	South Glos	Tuesday	18.00-21.30	3.5	Weekly		Re-provided on line and at Yate WestGate Centre

Changes to community Young Persons clinics

	Current				Proposed
YP CLINIC	Council	Day	Patient Time	Duration (hours)	
Patchway	South Glos	Weds	17:00-20:30	3.50	No change
Yate	South Glos	Weds	18:00-21:30	3.50	Extended L3 service
Cadbury Heath	South Glos	Mon	17:30-21:00	3.50	No change
Southmead	Bristol	Mon	16:00-19:30	3.50	No change
Amelia Nutt	Bristol	Mon	15:00-18:30	3.50	No change
Lawrence Weston	Bristol	Fri	15:00-18:30	3.50	No change
South Bristol Community Hospital	Bristol	Weds			New clinic– 6 months pilot
Clevedon	N Somerset	Thurs	15:00-18:30	3.50	Continue
Amelia Nutt	Bristol	Thurs	15:00-18:30	3.50	Reduced service plus new service at South Bristol
Charlotte Keel	Bristol	Mon	15:00-18:30	3.50	Relocated to Brook the Station
Knowle	Bristol	Tues	15:00-18:30	3.50	Re-provided at South Bristol

We would like to hear your views

We are confident that our proposal over the next three years will deliver our vision.

What do you think?

We would like to hear your views and to talk to you about how you can get further involved.

You can do this by:

- **Talk to one of our team**
- **Complete a feedback form**
- **Email your views to: sexualhealth@uhbristol.nhs.uk**



Integrating Sexual Health across
Bristol, North Somerset & South
Gloucestershire

*Healthier relationships and sexual wellbeing
throughout life, with improved sexual health outcomes
for the people of Bristol, North Somerset and South
Gloucestershire.*